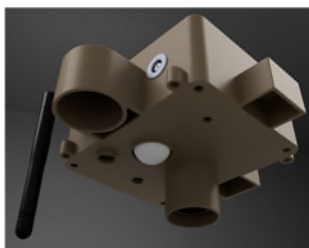


INSTRUCTIONS

www.hogfader.com



Unit #

XXXX

Hogfader ILLUMINATOR & PLATINUM hog hunting lights

Your Hogfader light was created to allow hunters to hunt hogs at night at ANY location where the hogs may not be used to light(s) at night. It is intended to be mounted or hung from a barrel or box feeder, 1 1/4" PVC post or tree. The unit has a socket built into it that allows the unit to be mounted onto a 1"dia PVC pipe (reducer included). The unit also has (4) magnets on the lid that allow you to mount the light to the bottom of a feeder barrel or spinner housing. (4) eyelets are molded in so it can be zip tied/bungeed in place if needed. The light is meant to shine 'down' over the baited area from above. It was designed to illuminate hogs whenever they are present in a baited area. The "NO SPOOK" fading technology is intended to reduce the chance that the hog(s) will be scared off by a sudden or 'new' light in any particular area.

Description:

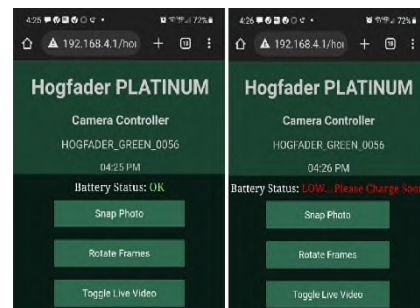
Our lights are housed in an injection molded enclosure that is rain proof and UV resistant. The LED light comes in RED, GREEN or INFRARED. The light has the following functions and specifications:

For ILLUMINATOR & PLATINUM:

- Powered by a standard 12v feeder battery (not included). Use the included lead to connect to power jack on unit
- Light sensor turns power on at dusk and off at dawn (there is no ON/OFF switch)
- Light stays very dim (after dark, when no motion is sensed)
- Motion sensor will trigger the light fading sequence (dim/bright/dim) when hogs are moving nearby
- Sequence: Light fades up for 90 secs, stays bright for a min of 150 secs, then fades back down for 45 seconds to dim
- 'Bright' duration is extended if motion is sensed while light is bright (adds 30 secs)
- A solar panel can be used to recharge your battery if keeping the unit in place for long periods of time
- You should verify that your battery is fully charged (over 12v) before connecting to the unit for a night's hunt.
- A battery status monitor has been added to the app and will show status as "OK" or "**LOW....please charge soon**".

Additional info PLATINUM only:

- A wifi camera is installed along with a 2.4 ghz antennae to transmit video (200+ yds line of sight)
- The unit does not require cellular service nor an internet connection
- Your phone or tablet connects directly to the Hogfader unit's network ID i.e. **HOGFADER_color_xxxx**
- The network PASSWORD is **12345678**
- The 'xxxx' is your unit's unique number. That number is noted at the top of this page.
- PLATINUM units in the same area will not interfere with each other due to unique ID numbers.
- Once connected to your unit's network, open the browser on your smart device and go to **http://198.164.4.1/home**
- You should see the PLATINUM controller screen appear as shown at right...



Note: It is very important to make sure that the antennae on the unit is oriented toward your location. This will provide the best signal. The '**Snap Photo**' button will display a captured image from the camera on the screen and will save a copy of that image in .jpg format to the SD card inside the unit (the lid must be removed from the unit to retrieve the SD card). The '**Toggle Live Stream**' button will display a live stream video of the action under the unit.

Contact us for any questions about the operation or any issues with your unit:

sales@hogfader.com

Below is the Hogfader mounting system. It comes in a kit and is available now. It will allow you to easily mount your light anywhere in approximately one or two minutes. It is shown with the optional solar panel (battery not included)

