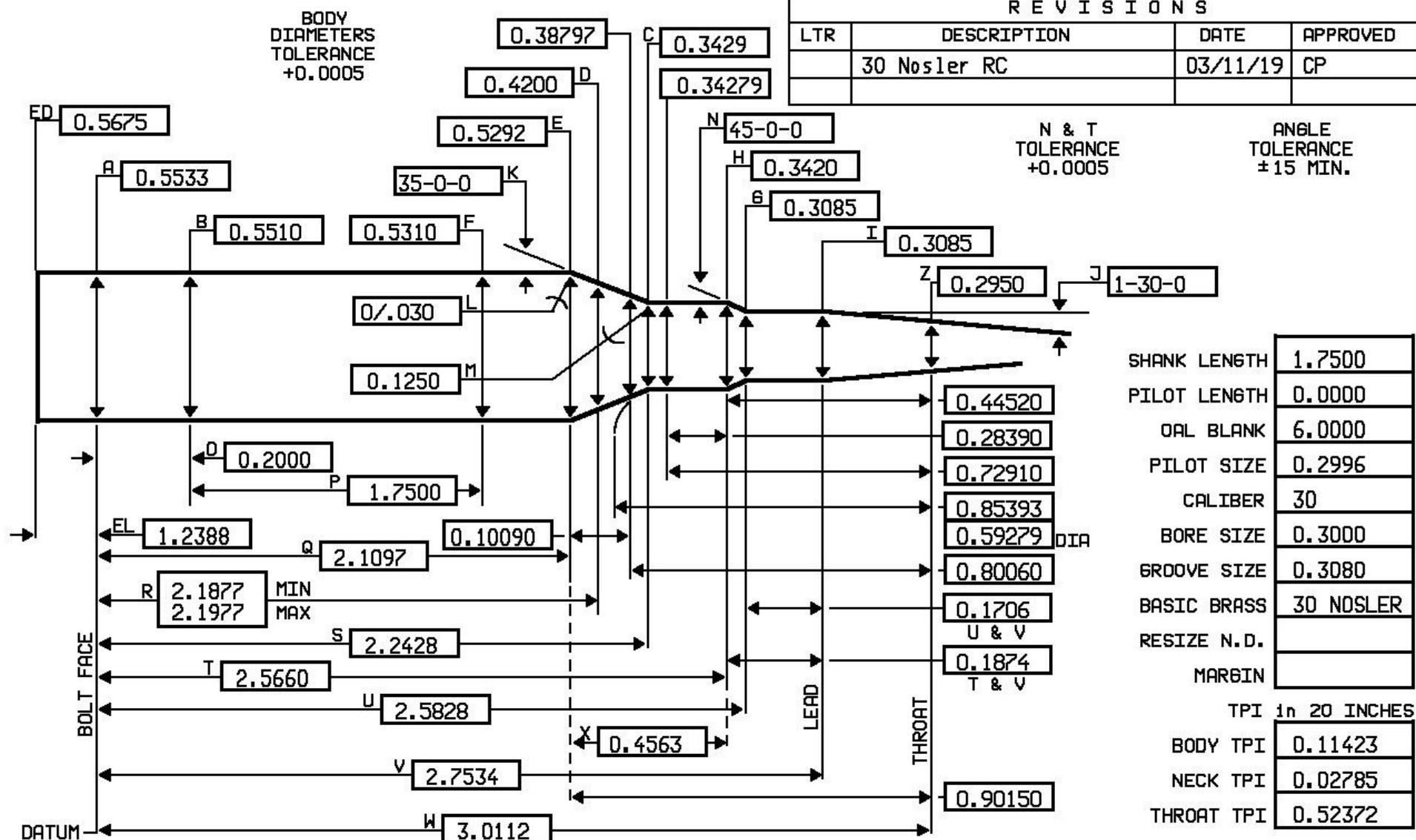


Tool ID: 6.0-#3-L

30 NOS RC



R E V I S I O N S			
LTR	DESCRIPTION	DATE	APPROVED
	30 Nosler RC	03/11/19	CP

SHANK LENGTH	1.7500
PILOT LENGTH	0.0000
OAL BLANK	6.0000
PILOT SIZE	0.2996
CALIBER	30
BORE SIZE	0.3000
GROOVE SIZE	0.3080
BASIC BRASS	30 NOSLER
RESIZE N.D.	
MARGIN	
TPI in 20 INCHES	
BODY TPI	0.11423
NECK TPI	0.02785
THROAT TPI	0.52372

DESIGNER
NAME Roger Carlton
PHONE ()

LENGTHS
TOLERANCE
+0.0050

JGS
COOS BAY, OR USA
97420

SIZE	DWN.	
A	DATE 03/11/19	
SCALE NONE		PR.

RIMLESS OR REBATED RIFLE
MINIMUM CHAMBER

PRINT # 30 NOS RC

COMMENT: Use standard 30 Nosler headspace gauges.